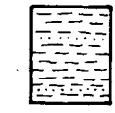

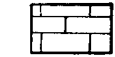
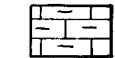


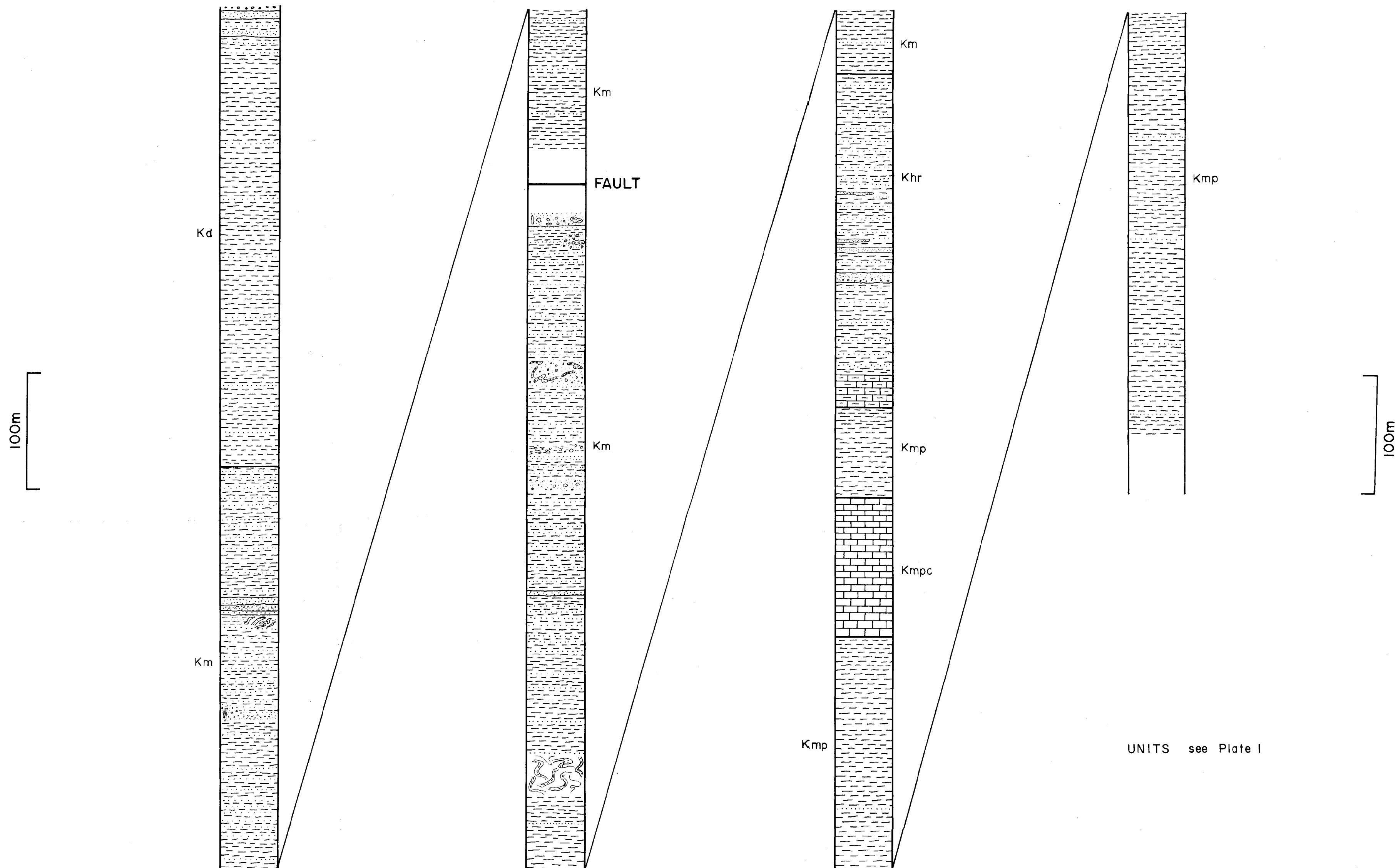
# PLATE IA

Dept. of Geological Science  
S.U.N.Y. Albany  
1400 Washington Avenue  
ALBANY, NY 12222

## STRATIGRAPHIC COLUMN OF THE CENTRAL BLOCK

### EXPLANATION

-  INTERBEDDED SANDSTONE & SHALE
-  CONGLOMERATE
-  LIMESTONE
-  ARGILACEOUS LIMESTONE



UNITS see Plate I